

# Alone

*How to explore Museum in the darkness*



Matteo Peterlini

# Alone

*How to explore Museum in the darkness*

Matteo Peterlini

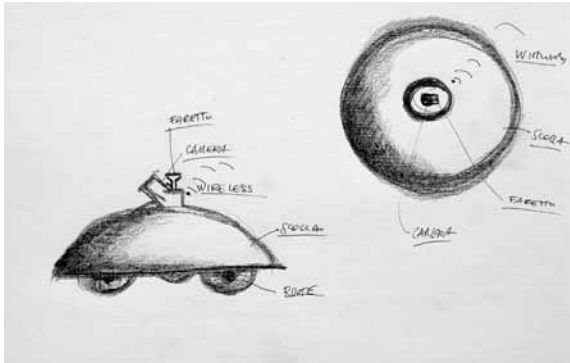
2010-2014

*I got the idea one day while I was visiting a museum. I was the last to go out, the doorman was closing the building after me, while the works, the walls, the furniture and everything else was being left alone in the soundless darkness.*

Rovereto, febbraio 2010

This project wants to pay attention to those public spaces where people meet, socialize and work. The places such as museum and galleries are mainly open to the public during the day. Hence, this project wants to answer this question: What happen inside these places when they are closed to the public? What do they look like when we cannot walk inside?

The *Alone* camera robot  
pencil on paper, 2010



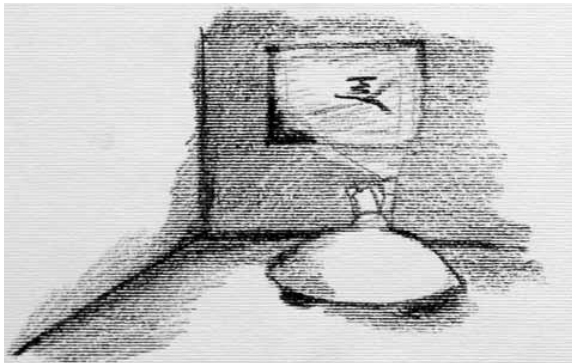
The project consists in a video-camera that roams around the empty museum filming its rooms by night. The video should be streamed in internet or projected outside of the Museum.

As a meditation on the inaccessibility of museums during the night time, this project aims at showing what happens when the museum is closed to the public.

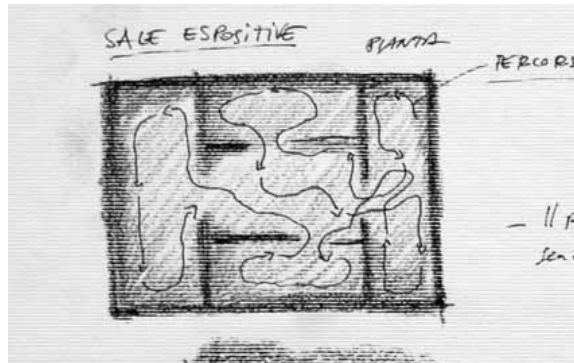
The idea is that the camera should not be used in a forcefully artistic way, but it should rather be left free to record its own memories.

The high definition camera is mounted on a robot that roams around the rooms while filming what it sees from its angle: a detail, a painting, dust.

The robot's roams in the Museum  
pencil on paper, 2010



The robot's path  
pencil on paper, 2010




SAGE ESPRESSIVE

PLANTS

RECORDS

- 11 f  
Sen 2



*I was looking for a way to reveal the Museum  
apart from any kind of intentionality in the means  
that Husserl calls intentionality: the “fundamental  
property of consciousness”.*

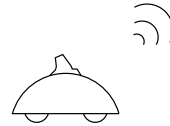


*Alone*, still image from video, site-specific previously realized, 2010

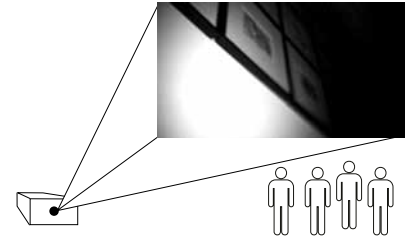


*Alone*, still image from video, site-specific previously realized, 2010





Robot drive in the Museum  
filmed and send the data in WI-FI



Projection on internet or on the facade of the Museum of the  
stream video from robot camera

The *Alone* robot is tall about 40 cm, its diameter sizes 35 cm, it is very lightweight and really sure because it is equipped with the most recent technologies which safe the objects and the furniture.

The *Alone* robot is connected with wireless (WI-FI) which sends video data to a internet web server. At this point the video will be broadcast live on a web site or on the facade of the Museum.

[www.matteopeterlini.it/alone/](http://www.matteopeterlini.it/alone/)  
[matteo.peterlini@gmail.com](mailto:matteo.peterlini@gmail.com)

